

Integrated Network Management Platform

Product Introduction

The integrated network management platform based on C/S architecture introduced by Visint[®], which provides server version (server side and client side) and standalone version. It can fully realize the comprehensive management of Visint[®] full-line communication network products. The platform is suitable for network deployment of various scales, and can build suitable network management solutions for network operators and enterprise users at all levels.

Product Feature

- ◆ Supporting SNMP and managing all kinds of devices under a unified network management platform.
- ◆ Providing powerful multi-level network topology management function, realizing fast and automatic discovery of network topology and generates intuitive and vivid display graphics.
- ◆ Following the TMN specification to implement functions such as device management, monitoring and deployment, software upgrade management, configuration file management, alarm and performance management, and implement network management from device level to network level.
- ◆ Supporting WEB network management graphical interface, simple, intuitive and easy to learn, easy to troubleshoot, no need to install network management software.

Topology Management

Supporting manual topology rendering and automatic topology discovery and can modify the properties of the topology.

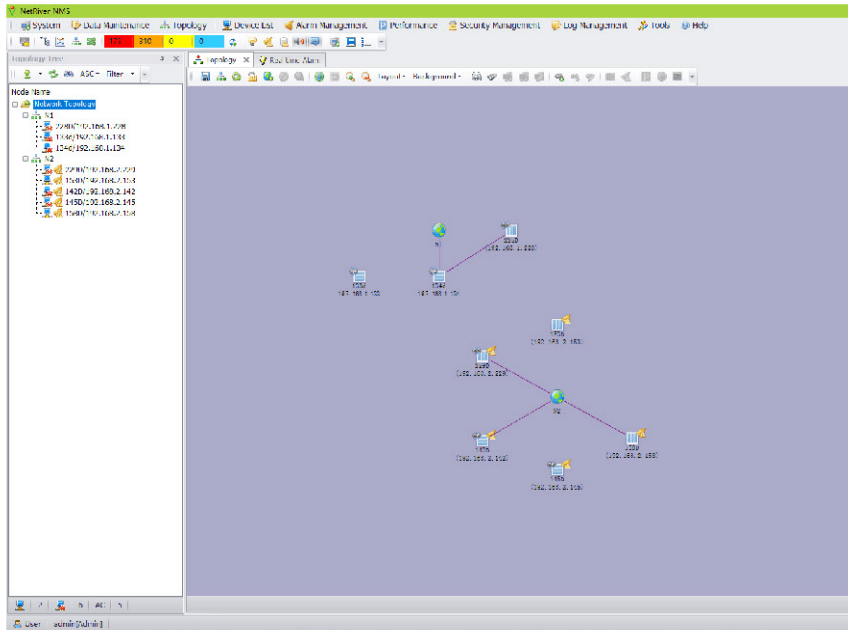


Figure 1: Topology Management

Device Management

Providing the panel view of the device, the information of interface and LEDs in the view is consistent with the actual panel view of the device. The management is convenient and the status of the device is clear at a glance.

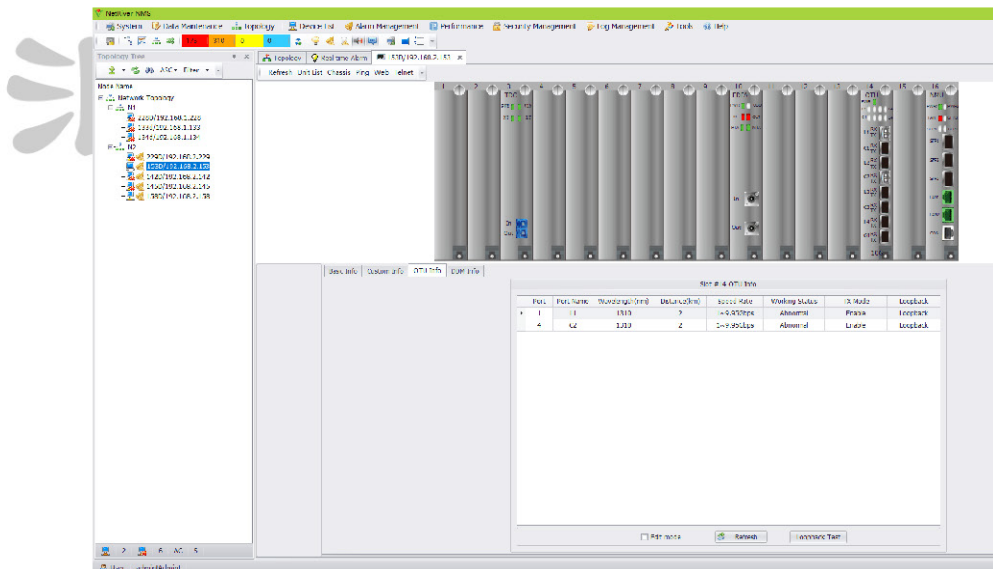


Figure 2: Device Management

Alarm Management

Providing real-time alarm information reminder, historical alarm records query and export, and generates a column chart based on the alarm type.

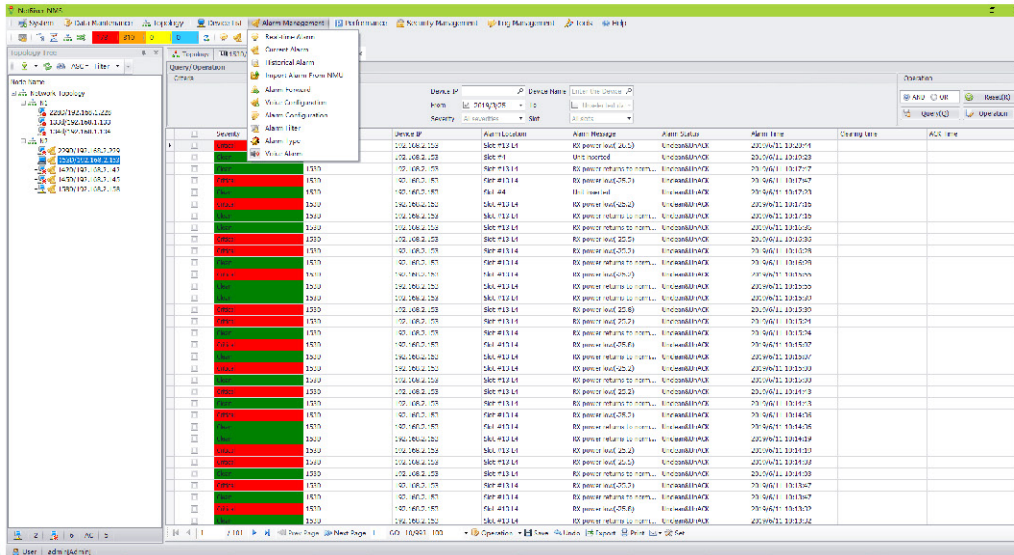


Figure 3: Alarm Management

User Management

Supporting three levels of user types, super user, administrator user, and general user.

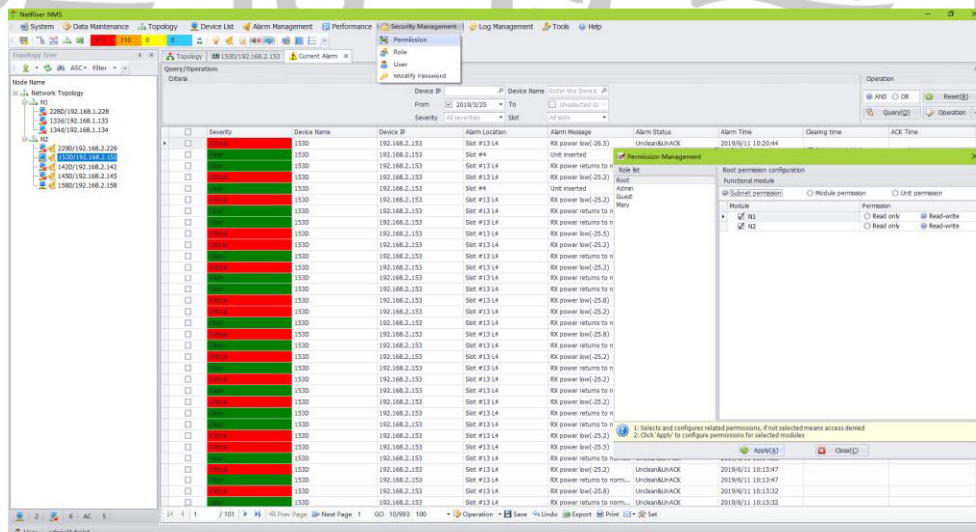


Figure 4: User Management

Database Maintenance

Supporting data import and export, backup and convenient system maintenance.

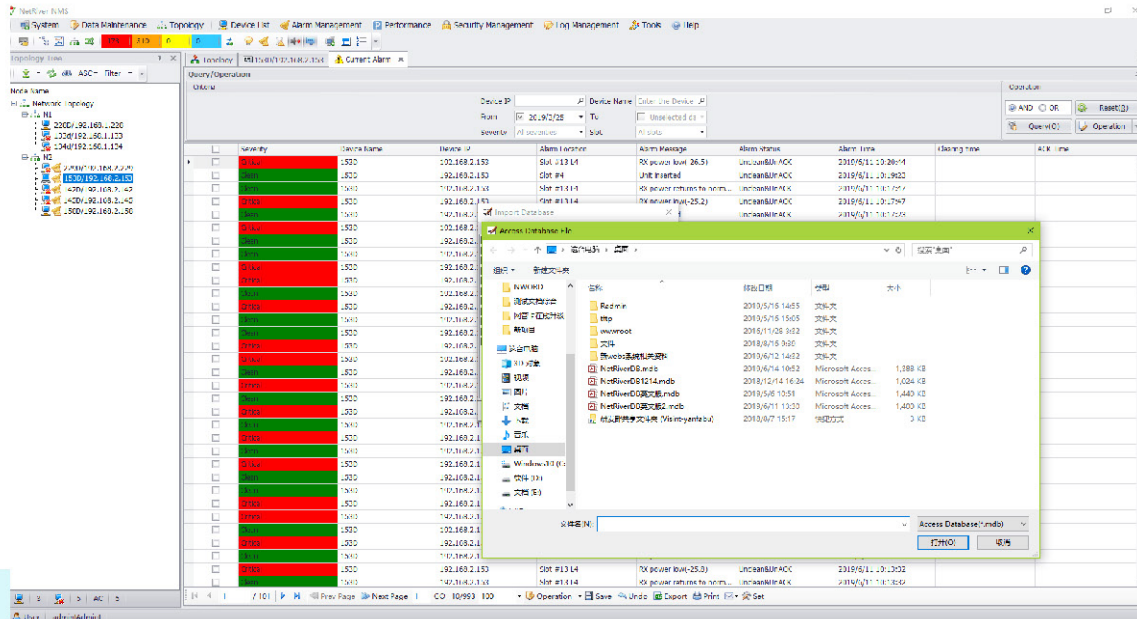


Figure 5: Database Maintenance

System Maintenance

Supporting remote upgrade, provides SNMP, TelNet, and console management modes, and can remotely upgrade device software.

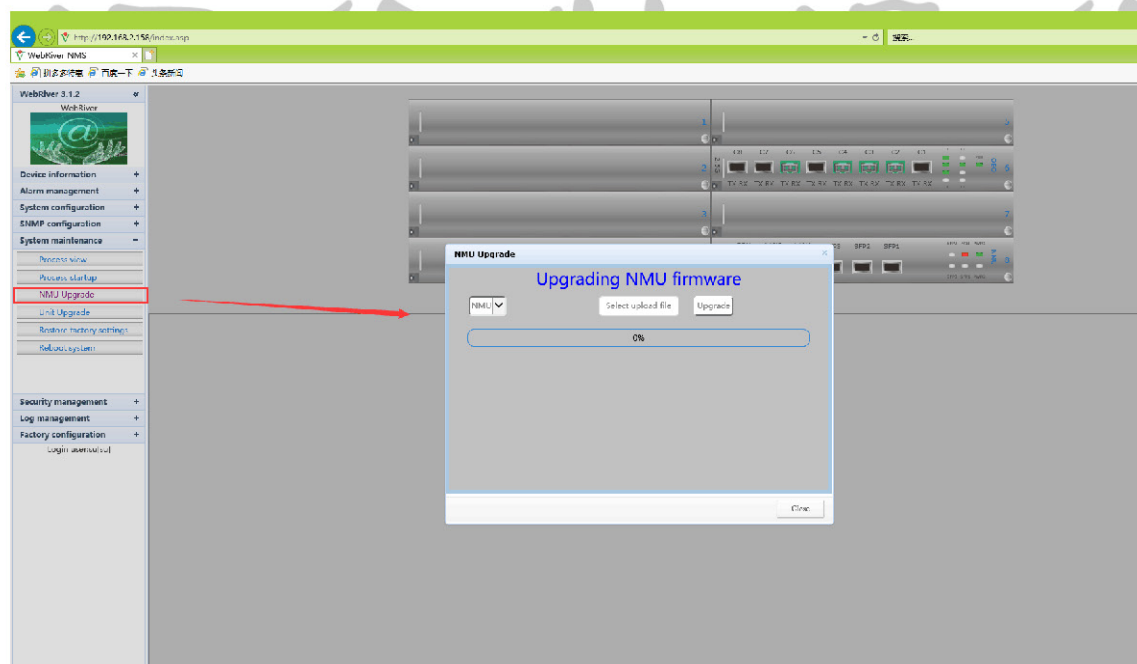


Figure 6: System Maintenance